

Belt conveyer

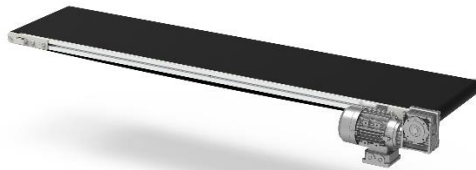
To directly connect your binding stations



*Note: the picture displays the [full set](#). The product presented on this page is a partial product.

Belt conveyer – only body

This product is a partial component of the [Belt conveyer – full set](#). The gravity roller conveyer is designed as an extension to outfeed conveyors of our stacking solutions.



Specifications

Bare belt conveyer parameters	
Physical parameters	
Length	1000/1200/1700/2500mm
Width	Direct drive - 510mm Drive with a belt gear - 432 mm Omega drive - 510 mm
Height	Direct drive - 196 mm Drive with a belt gear - 387 mm Omega drive - 217mm
Weight (1000/1200/1700/2500mm)*	16-19 / 17-20 / 21-24 / 26-29 kg
Belt parameters	
Low grip belt	https://urlzs.com/opx6B
Normal grip belt	https://urlzs.com/kMBWB
High grip belt	https://urlzs.com/fUonc
Electrical supply data	
Voltage	3~ 230V AC 50Hz
Power input	500W

*Depends on a drive type